

10-APR-2014

ELF-HSFS

1-10

A0I

GENERAL**ATS Hours**

| 0500-1500

Airport Information

RFF: CAT 8
PCN: RWY 05/23: 61/F/B/X/T

DEPARTURE**Take-off Minima**

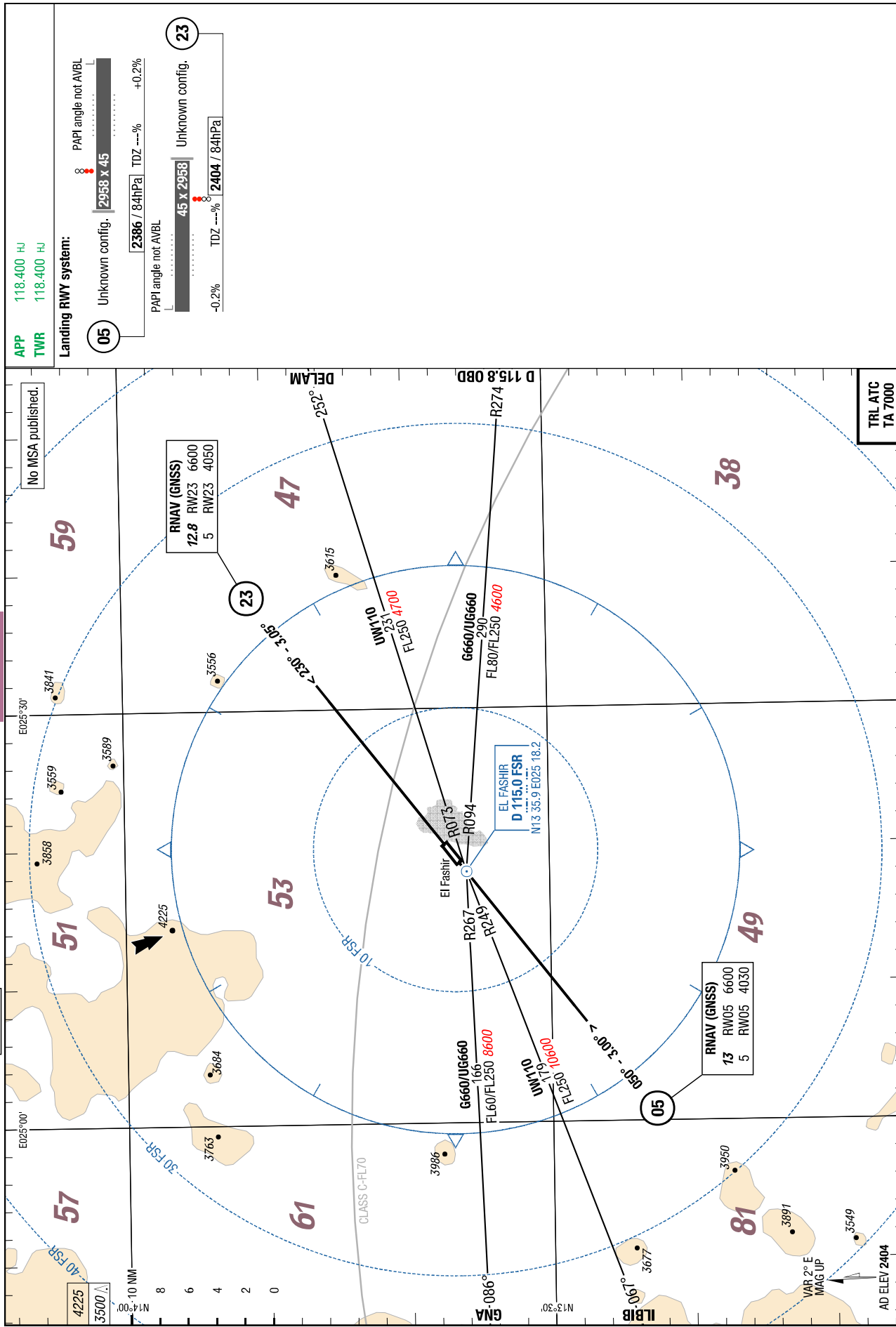
RWY		05/23	
All ACFT	ft - m/km	0 - 500v	-

04-OCT-2012
ELF-HSFS

2-10

Sudan El Fasher
AGC
AFC

El Fasher Sudan
AGC
AFC



APP 118.400 Hz
TWR 118.400 Hz

Landing RWY system:

05 Unknown config. 2958 x 45 PAPI angle not AVBL
2386 / 84hPa TDZ ---% +0.2%

23 Unknown config. 45 x 2958 PAPI angle not AVBL
2404 / 84hPa TDZ ---% -0.2%

No MSA published.

RNAV (GNSS)
12.8 RW23 6600
5 RW23 4050

RNAV (GNSS)
13 RW05 6600
5 RW05 4030

EL FASHER
D 115.0 FSR
N13 35.9 E025 18.2

ILBIB
VOR 2° E
MAG UP
AD ELEV 2404

CLASS C-FL70

DELAM

D 115.8 OBD

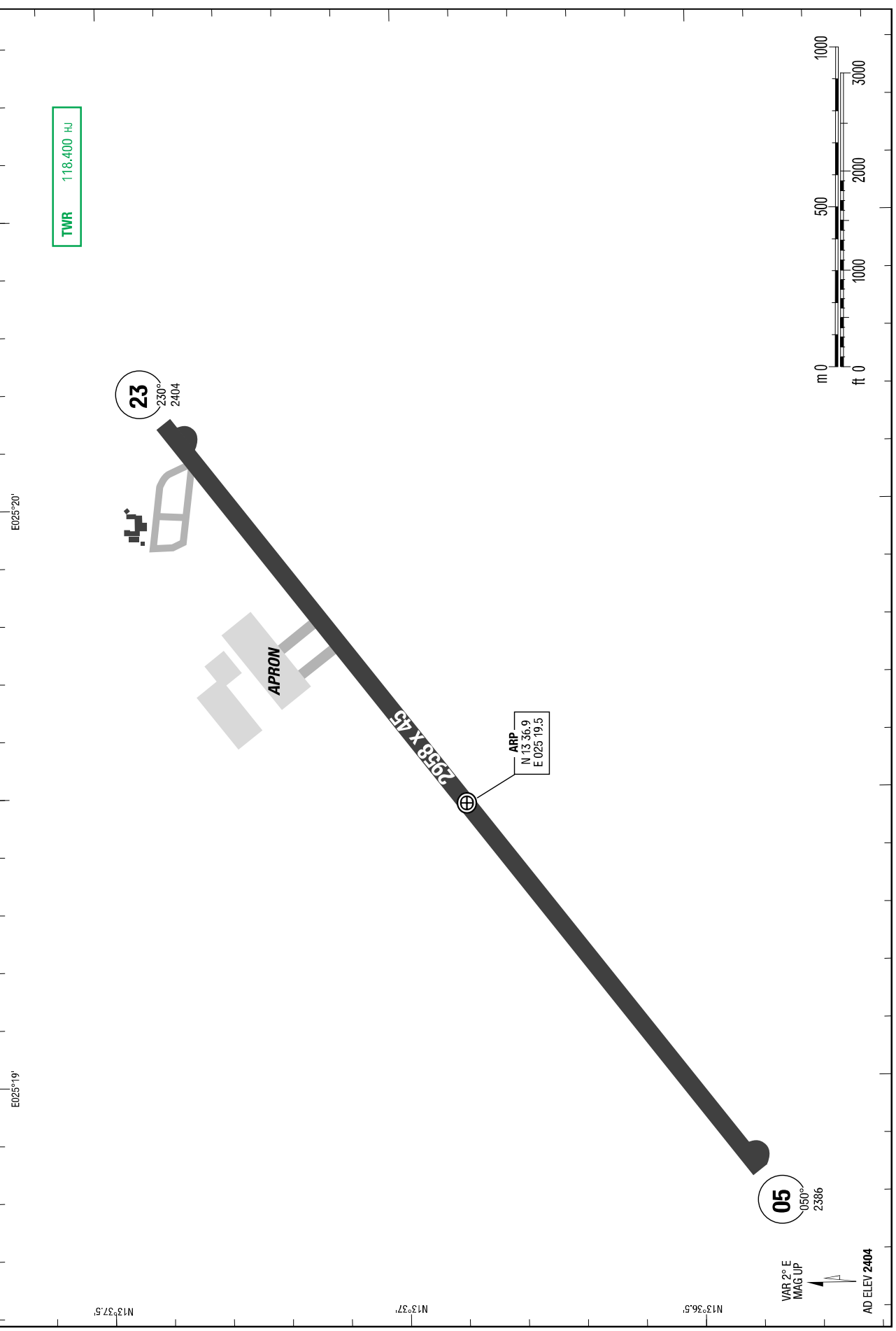
TRL ATC
TA 7000

04-OCT-2012
ELF-HSFS

3-20

Sudan El Fasher
AGC

El Fasher Sudan
AGC



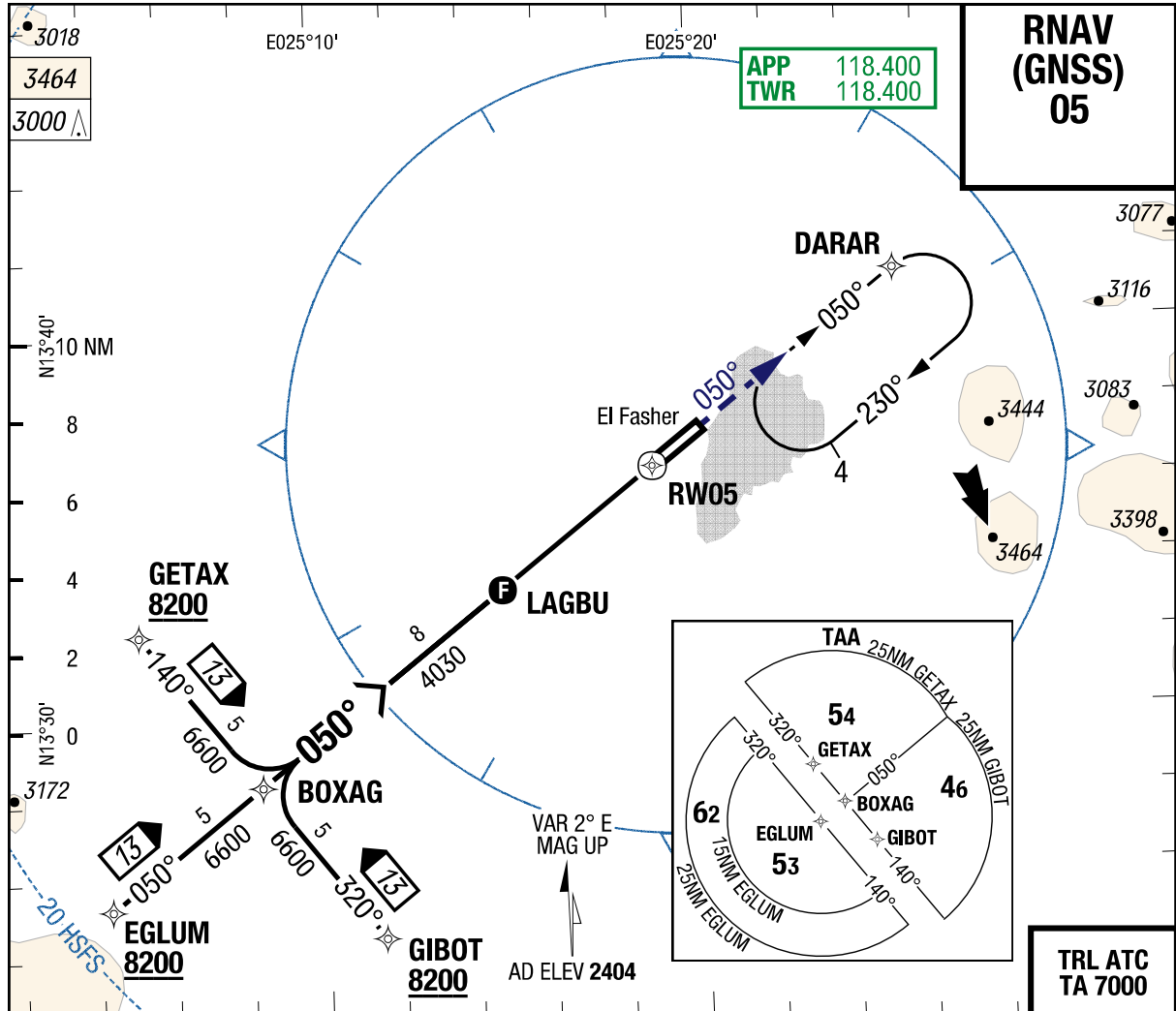
Changes: FREQ

THIS CHART IS A PART OF NAVIGRAPH CHARTS AND IS INTENDED FOR FLIGHT SIMULATION USE ONLY

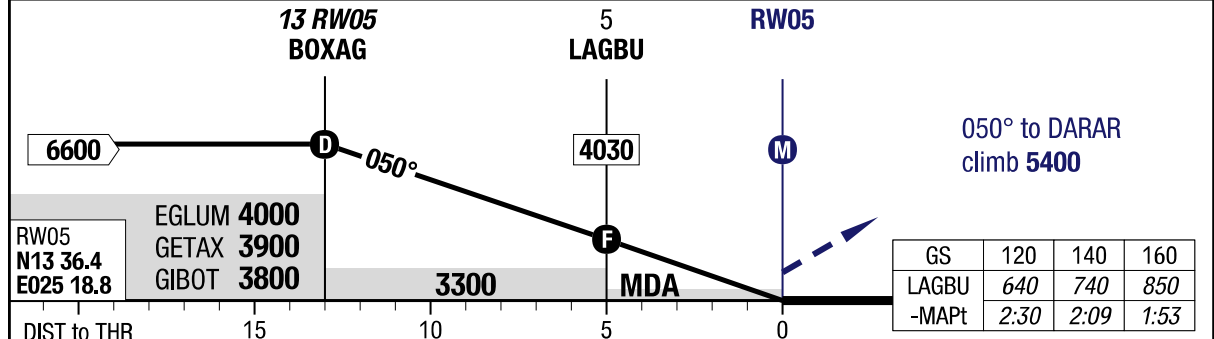
10-SEP-2015
ELF-HSFS

7-10

RNAV (GNSS) 05



3.00°	13	10	8	6	4	2	PAPI angle not AVBL 05 Unknown config. 2958 x 45 2386 / 84hPa TDZ ---% +0.2%
RW05	6600	5640	5000	4360	3720	3080	



05		RNAV GNSS VNAV HJ only ^{1) 2)}	RNAV GNSS LNAV HJ only	Circling	
C	ft - m/km ft	300 - 1.9V 2700	320 - 1.9V 2720	HJ only 650 - 3.8V 3050	
D	ft - m/km ft	300 - 1.9V 2700	320 - 1.9V 2720	700 - 4.7V 3110	

1) Uncompensated BARO VNAV NA below +11°C (52°F)
2) With EVS VIS 1.3km

CHART LINKED TO NAVIGRAPH ACCOUNT <MUJTABA>

Changes: MIN

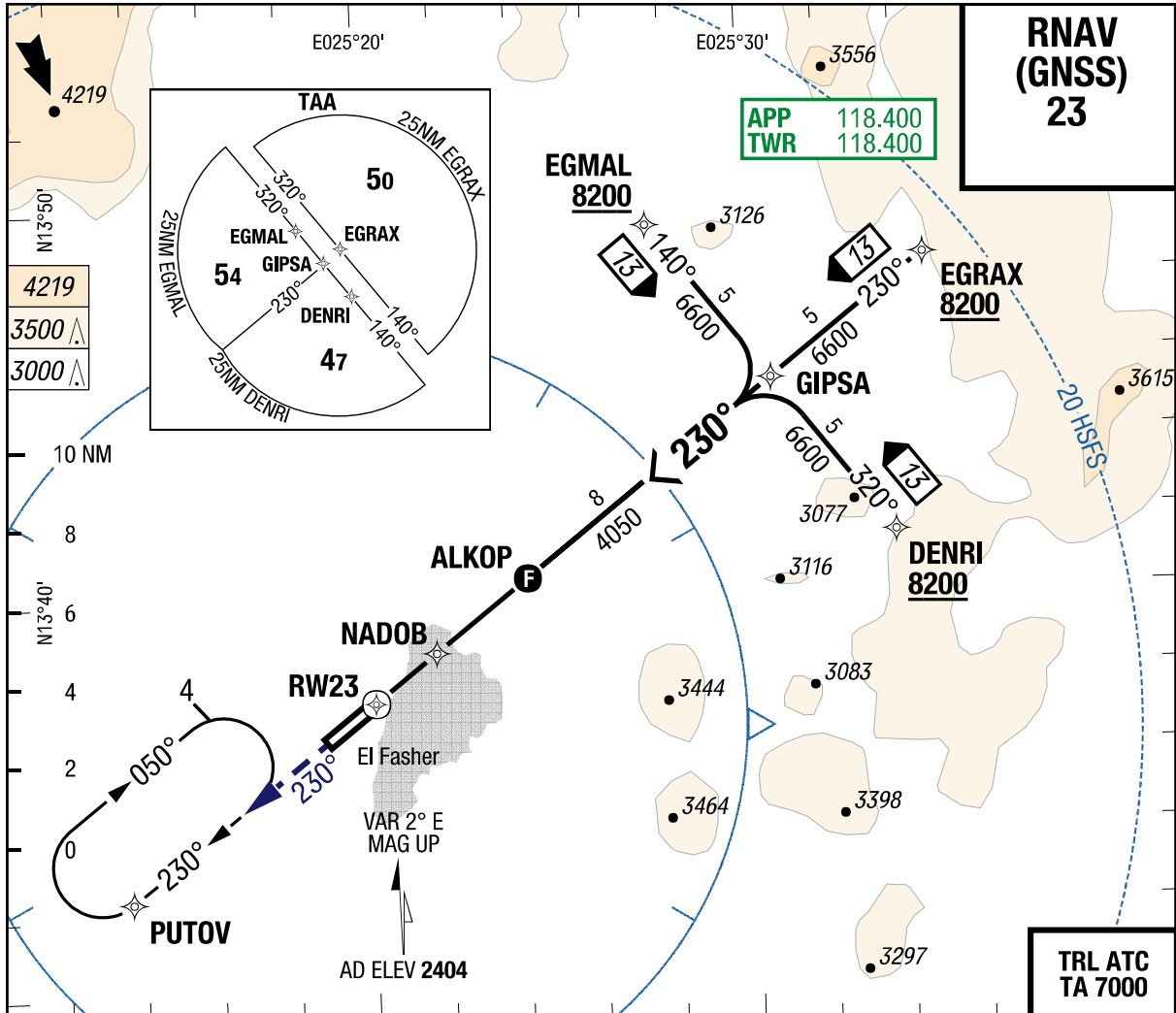
THIS CHART IS A PART OF NAVIGRAPH CHARTS AND IS INTENDED FOR FLIGHT SIMULATION USE ONLY

© Lido 2015

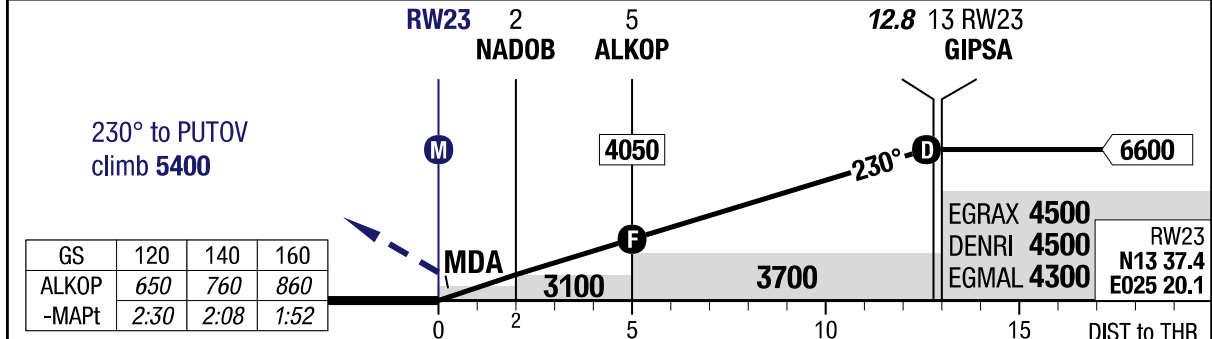
10-SEP-2015
ELF-HSFS

7-20

RNAV (GNSS) 23



PAPI angle not AVBL	2	4	6	8	10	12.8	3.05°
45 x 2958 Unknown config. 23	3110	3750	4400	5050	5700	6600	RW23
-0.2% TDZ ---% 2404 / 84hPa							



23		RNAV GNSS VNAV HJ only ^{1) 2)}	RNAV GNSS LNAV HJ only			Circling HJ only
C	ft - m/km ft	380 - 2.4V 2800	380 - 2.4V 2800			650 - 3.8V 3050
D	ft - m/km ft	380 - 2.4V 2800	380 - 2.4V 2800			700 - 4.7V 3110

1) Uncompensated BARO VNAV NA below +11°C (52°F)
 2) With EVS VIS 1.6km

CHART LINKED TO NAVIGRAPH ACCOUNT <MUJTABA>

© Lido 2015