

GENERAL

ATS Hours

H24

Airport Information

RFF: CAT 7

PCN: RWY 01/19: 72/F/C/Y/T

DEPARTURE

Take-off Minima

RWY		01/19
All ACFT	ft - m/km	0 - 400v

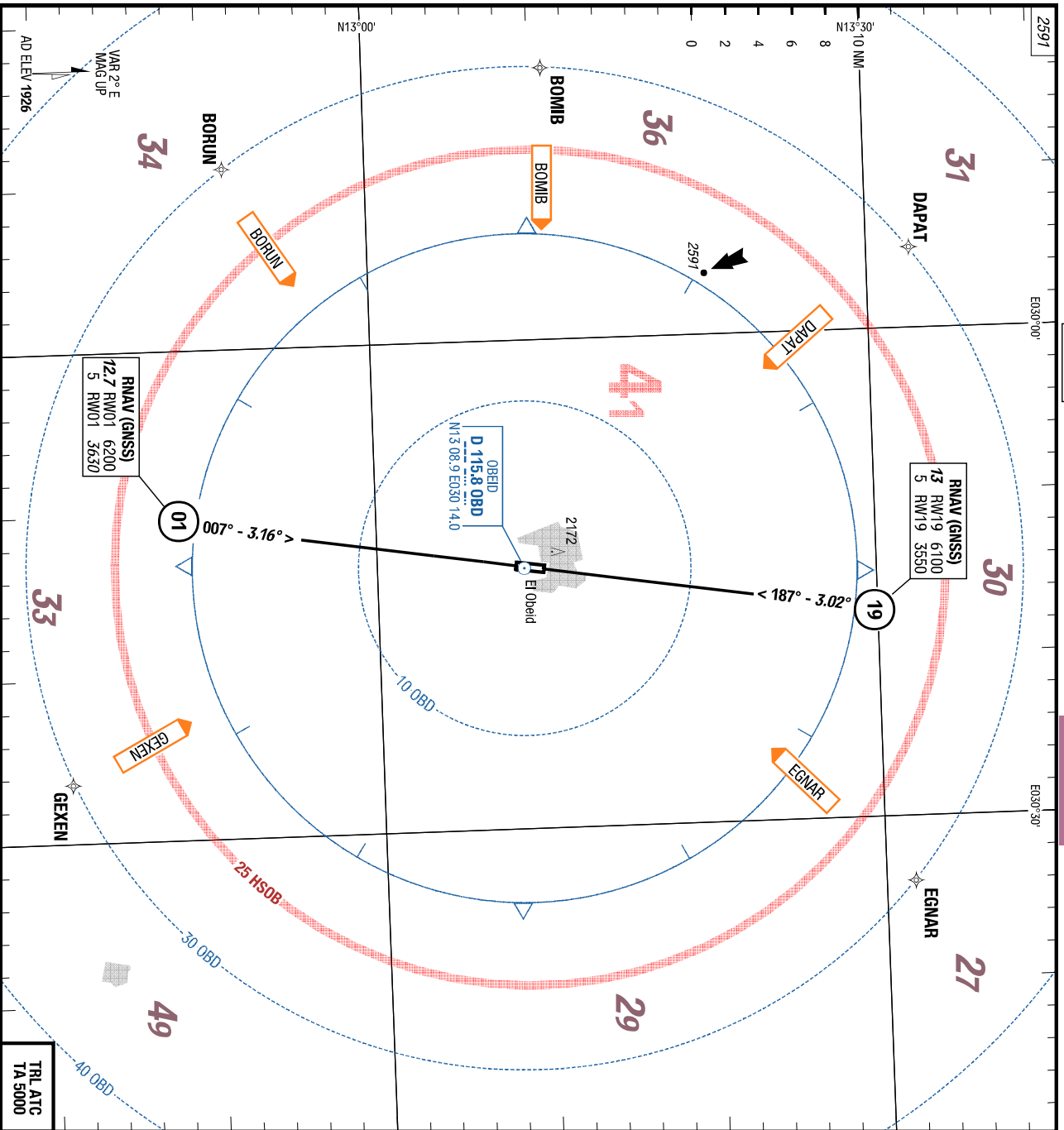
13-MAR-2014
EBD-HSOB

2-10

Sudan El Obeid
AGC
AFC

AFC

El Obeid Sudan
AGC
AFC



APP 118.500
TWR 118.500
GND 118.500

Landing RWY system:

01 PAPI angle not AVBL
L-S 1899 / 67NPA TDZ ---% Yellow only 0.0%

19 PAPI angle not AVBL
L-S 1901 / 67NPA TDZ ---% Yellow only 0.0%

TRL ATC
TA 5000

RNAV (GNSS)
12.7 RW01 6200
5 RW01 3630

RNAV (GNSS)
13 RW19 6100
5 RW19 3550

OBEID
D 115.8 OBD
M13 08.9 E050 14.0

Changes: AP_L, APCH boxes, Editorial

THIS CHART IS A PART OF NAVIGRAPH CHARTS AND IS INTENDED FOR FLIGHT SIMULATION USE ONLY

13-MAR-2014
EBD-HSOB

3-20

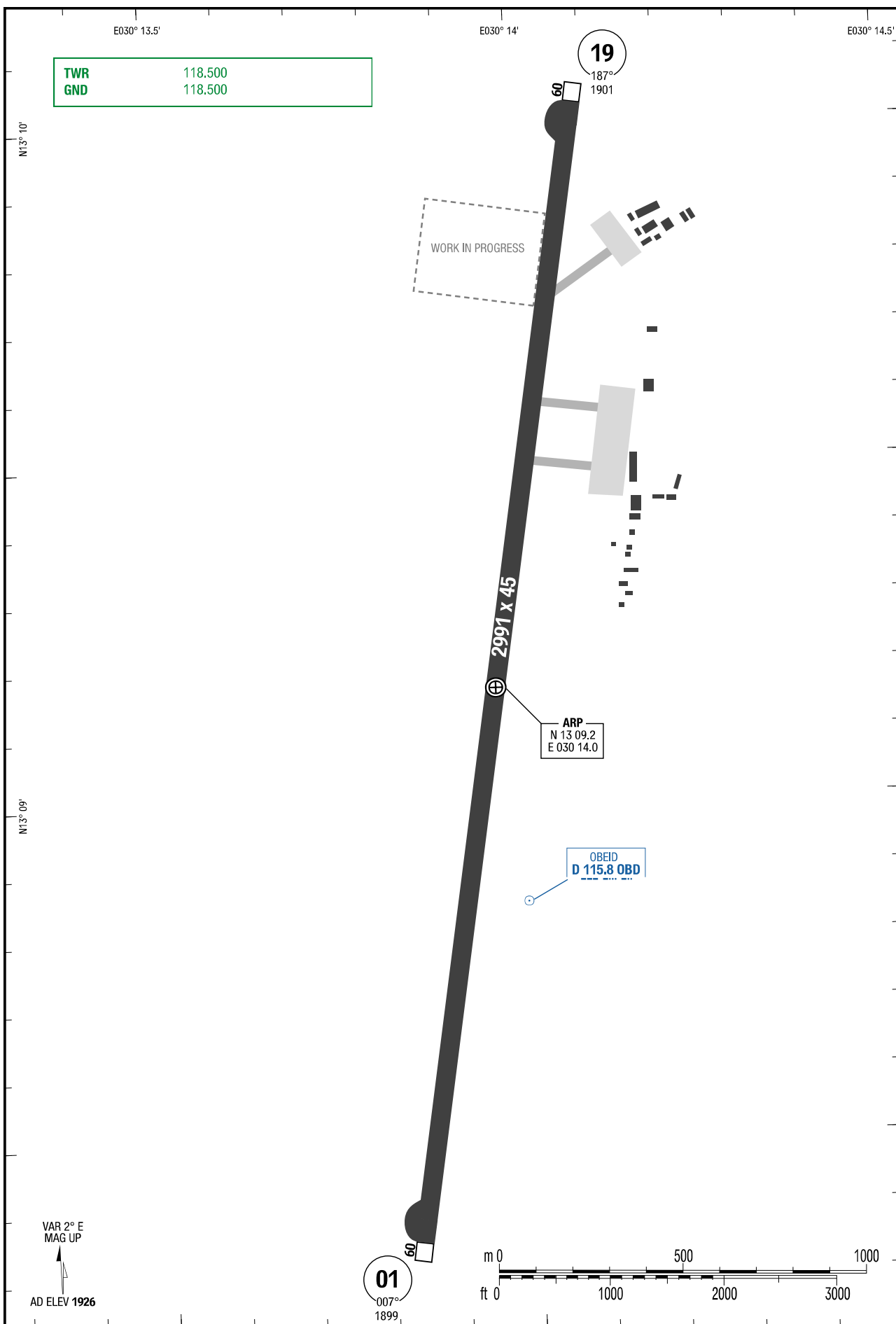
Sudan El Obeid
AGC

AGC

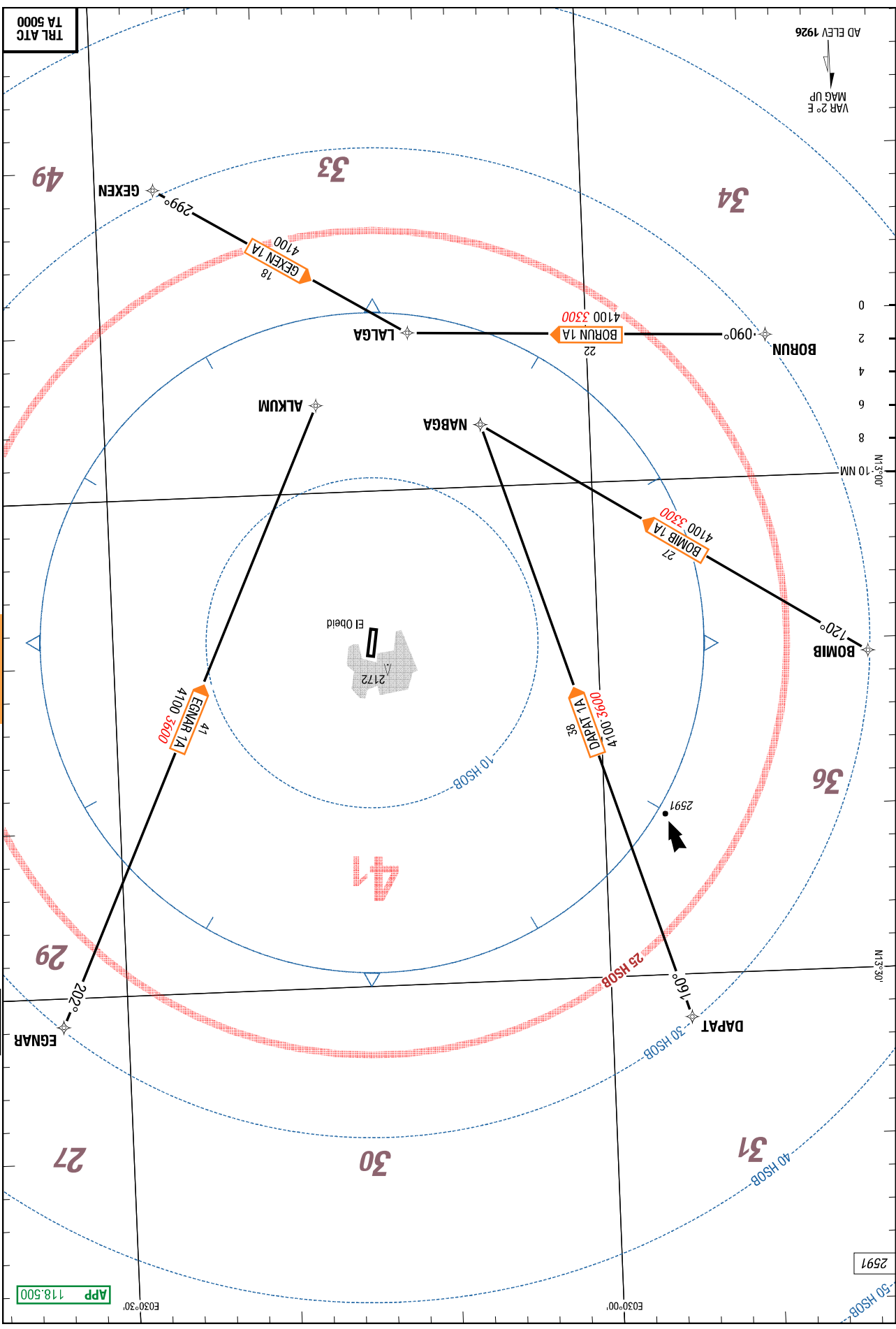
AGC

El Obeid Sudan
AGC

Changes: THR ELEV



THIS CHART IS A PART OF NAVIGRAPH CHARTS AND IS INTENDED FOR FLIGHT SIMULATION USE ONLY



TRL ATC
TA 5000

AD ELEV 1926
VAR 2° E
MAG UP

El Obeid Sudan
RNAV STARS

STAR
STAR

Sudan El Obeid
RNAV STARS

6-10
EGNAR

13-SEP-2012
EBD-HSOB

App 118.500

2591

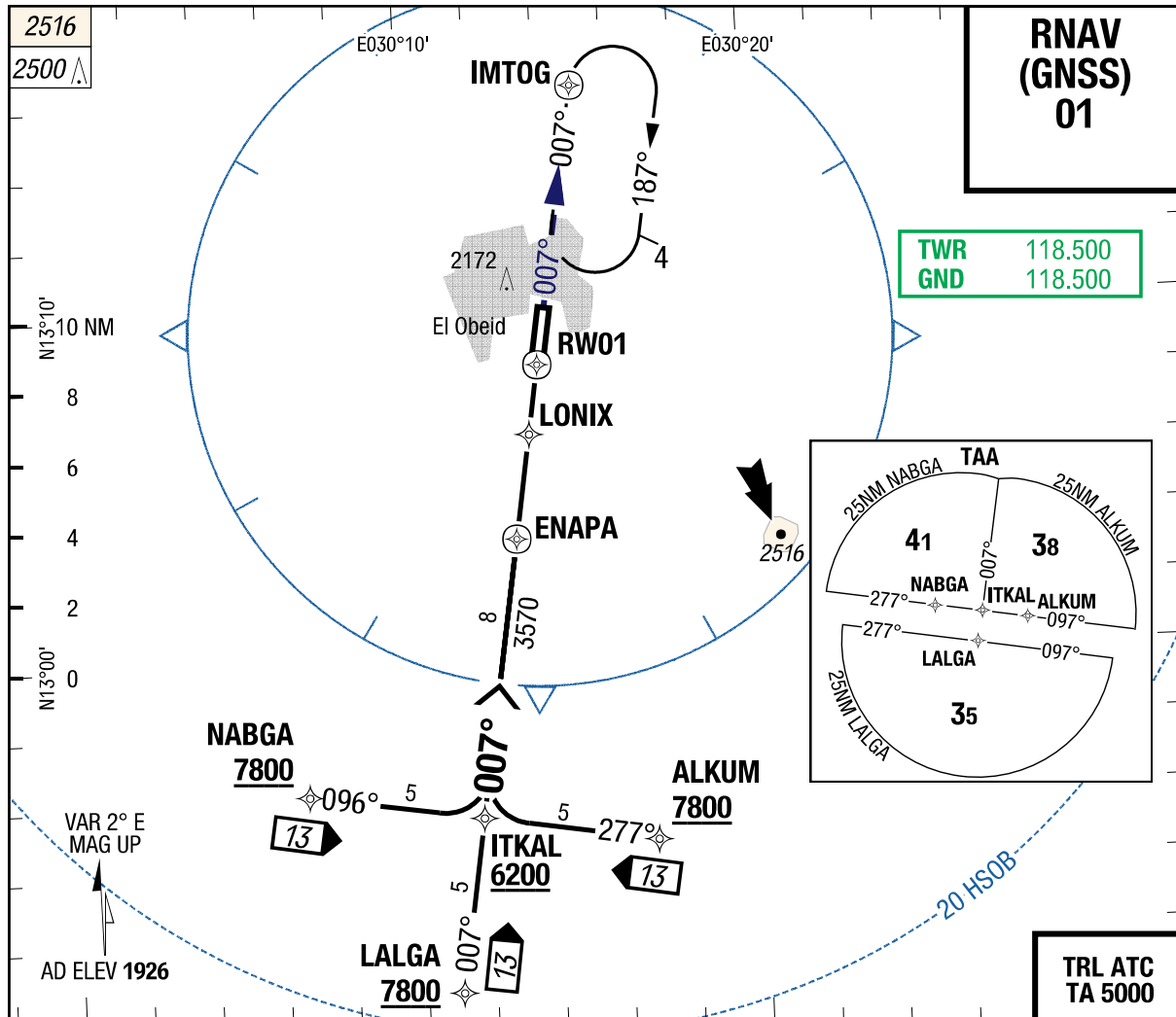
Changes: ASP

THIS CHART IS A PART OF NAVIGRAPH CHARTS AND IS INTENDED FOR FLIGHT SIMULATION USE ONLY

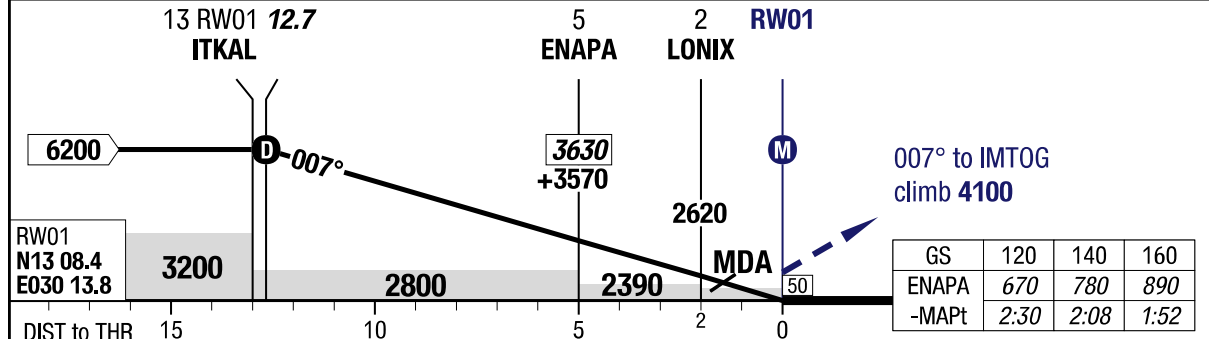
10-SEP-2015
EBD-HSOB

RNAV (GNSS) 01

7-10



3.16°	12.7	10	8	6	4	3	PAPI angle not AVBL 2991 x 45 Yellow only 1899 / 67hPa TDZ ---% 0.0%
RW01	6200	5310	4640	3970	3290	2960	



01		RNAV GNSS VNAV 1) 2)	RNAV GNSS LNAV	Circling 3)	
C	ft - m/km ft	340 - 1.9V 2260	370 - 2.4V 2290	650 - 3.8V 2570	
D	ft - m/km ft	340 - 1.9V 2260	370 - 2.4V 2290	700 - 4.7V 2630	

1) Uncompensated BARO VNAV NA below +12°C (54°F) 3) To RWY 19 HJ only
 2) With EVS VIS 1.3km

CHART LINKED TO NAVIGRAPH ACCOUNT <MUJTABA>

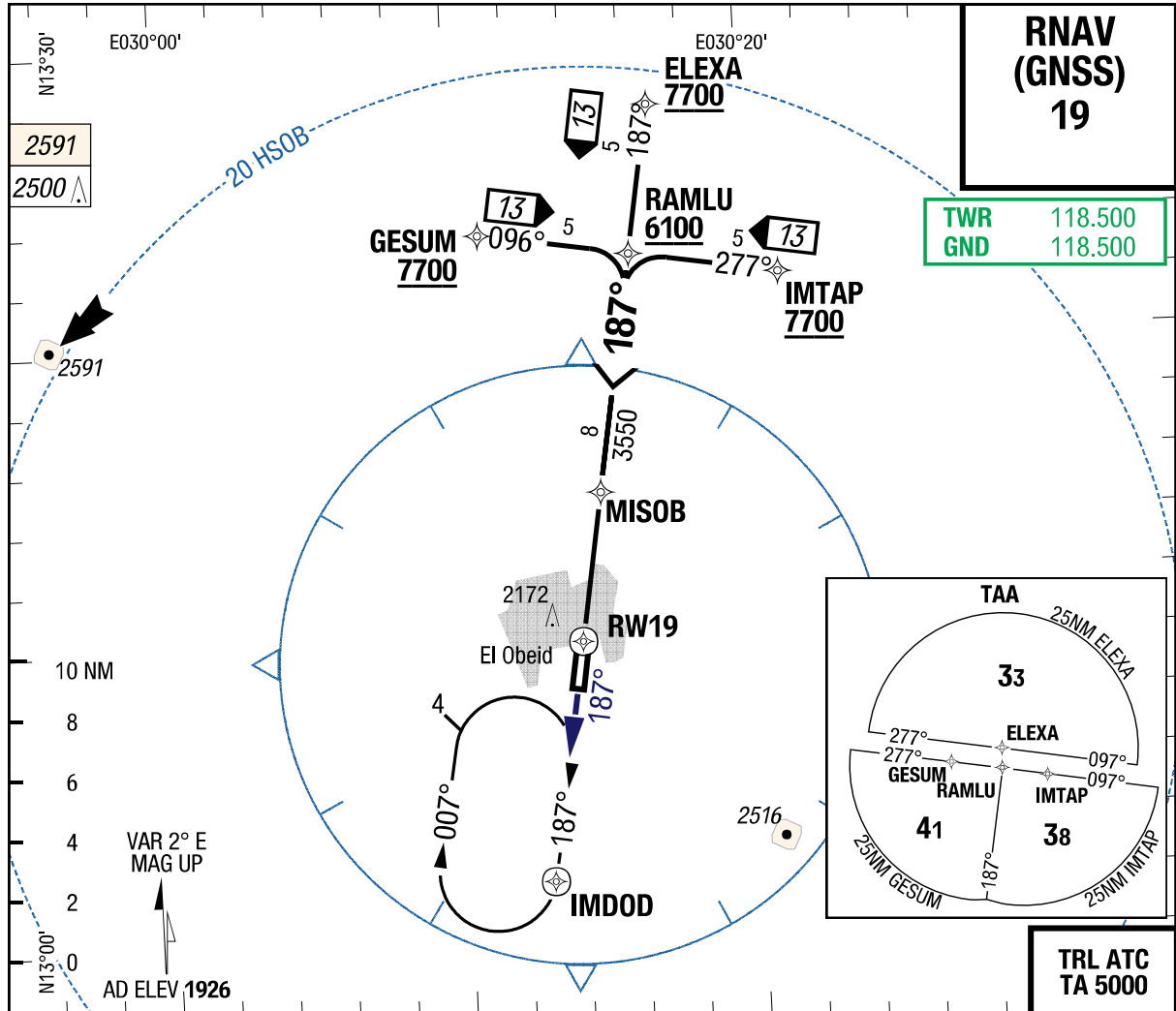
Changes: MIN

THIS CHART IS A PART OF NAVIGRAPH CHARTS AND IS INTENDED FOR FLIGHT SIMULATION USE ONLY

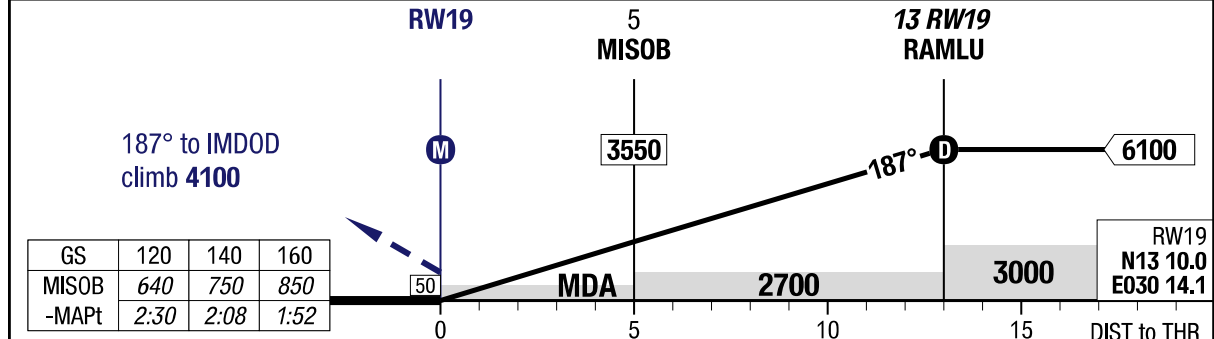
10-SEP-2015
EBD-HSOB

7-20

RNAV (GNSS) 19



L 45 x 2991 PAPI angle not AVBL 0.0% TDZ ---% 1901 / 67hPa	19	2	4	6	8	10	13	3.02° RW19
		2600	3240	3880	4520	5160	6100	



19		RNAV GNSS	RNAV GNSS			Circling
		VNAV HJ only ^{1) 2)}	LNAV HJ only			
C	ft - m/km ft	390 - 2.4V 2290	450 - 2.8V 2350			650 - 3.8V 2570
D	ft - m/km ft	390 - 2.4V 2290	450 - 2.8V 2350			700 - 4.7V 2630

1) Uncompensated BARO VNAV NA below +12°C (54°F)
 2) With EVS VIS 1.6km

CHART LINKED TO NAVIGRAPH ACCOUNT <MUJTABA>

© Lido 2015